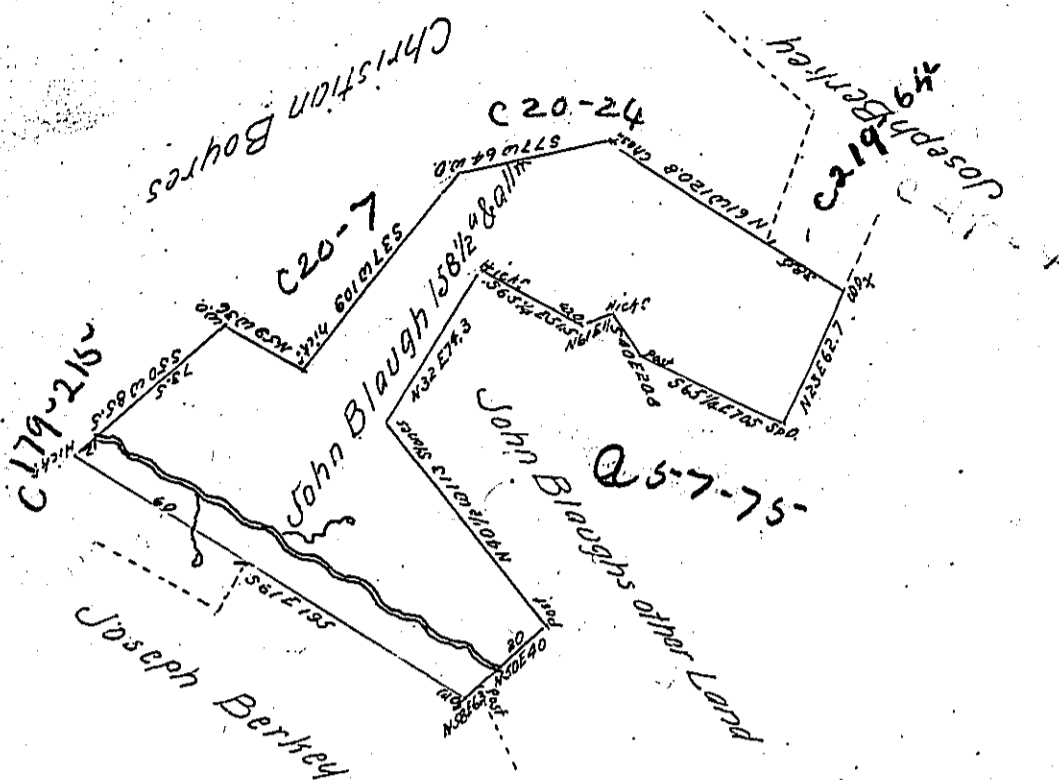


name Jno^e Blough instead of Jno^e Blough as it is generally spelled

Jno^e McClean

Note I have not Bloughs warrant at present to have

reference to and perhaps there might be a ^{small} addition in spelling

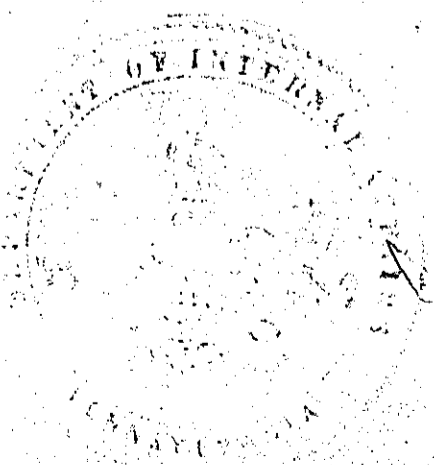


Situate on the East side of Quemahoning Creek about one Mile from the Junction of said
 Creek and Stony Creek in Quemahoning Township Somerset County and Surveyed the 10th
 day of April 1812 unto the said John Blough in pursuance of a warrant dated the 20th
 day of November 1811

pr
 John McClean Deputy

To Andrew Porter Esquire }
 Surveyor General }

IN TESTIMONY that the above is a copy of the original remaining on file in
 the Department of Internal Affairs of Pennsylvania, made
 conformably to an Act of Assembly approved the 16th day of
 February, 1833, I have hereunto set my Hand and caused
 the Seal of said Department to be affixed at Harrisburg,
 this fifth day of January 1904



Joac P. P...
 Secretary of Internal Affairs.